

Installing ISPSOft and COMMGR

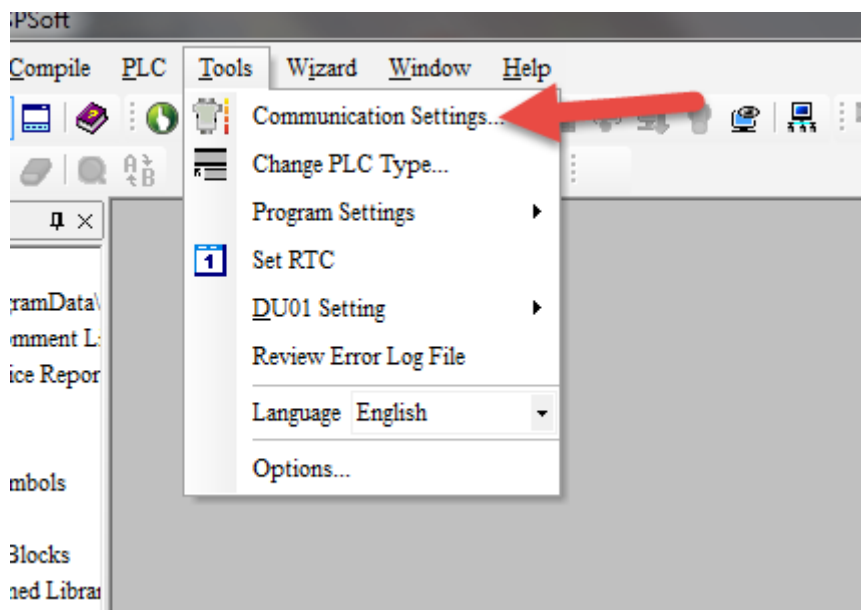
1. Install ISPSOft from Delta website

Go to http://www.delta.com.tw/product/em/download/download_main.asp?act=3&pid=3&cid=1&tpid=3 and click on ISPSOft V1.03 to download it.

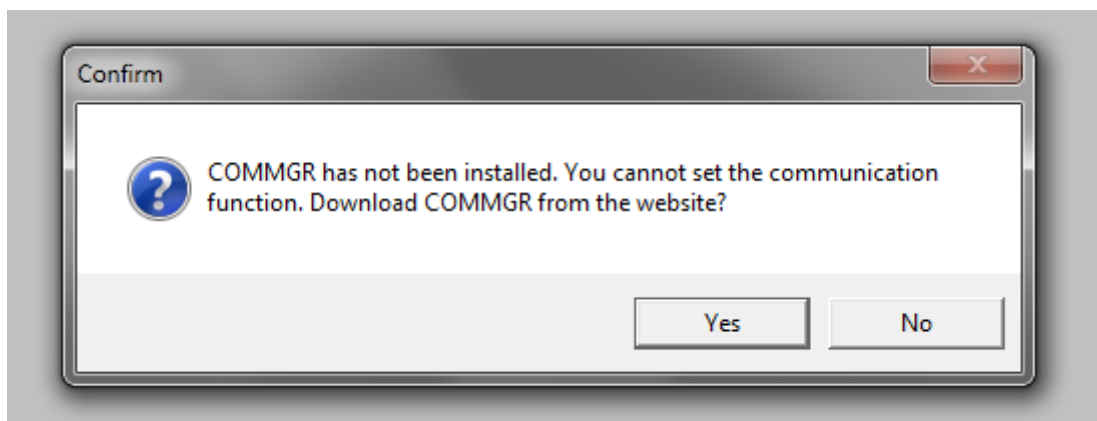
ader	WPLSoft V2.38	Editing software for DVP series (Multilingual)	2000, XP, Vista or Windows 7, Windows 8 (32-bit/64-bit)	2014-09-09	74.8MB
	ISPSOft V1.03	Editing software for DVP series (Multilingual)	Windows 2000, XP, Vista or Windows 7(32-bit/64-bit)	2011-08-05	62.5MB
		Software for Delta network			

2. Open ISPSOft and check communication settings

After installation open ISPSOft and check the communications settings are setup.



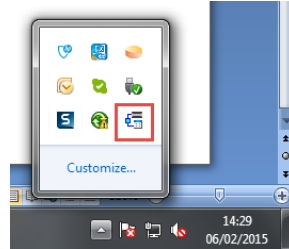
If COMMGR is not installed you should be prompted to download it. Click YES and download COMMGR from the Delta website.



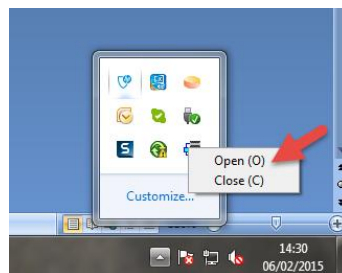
Click on COMMGR V1.04 to download it.

DVP-SX2 Driver	DVP-SX2 driver	Windows XP, Windows 7(32-bit/64-bit)	2012-06-19	4.04MB
COMMGR V1.04	integrated communication management software	Windows XP, Windows 7(32-bit/64-bit)	2013-07-23	10.9MB
WPLSoft V2.38	Editing software for DVP series	Windows 98, Me, NT4.0, 2000. XP. Vista or Windows	2014-09-09	74.8MB

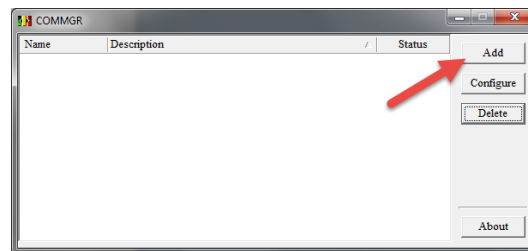
After successfully installing COMMGR, you will see the Icon for COMMGR appear in the bottom right toolbar.



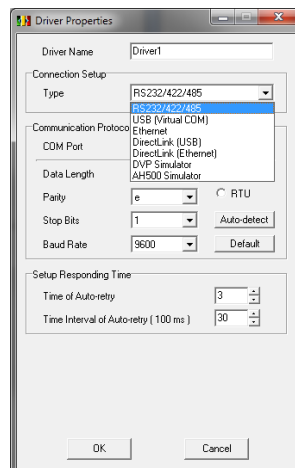
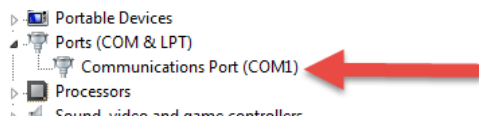
Right click on the icon and click on open



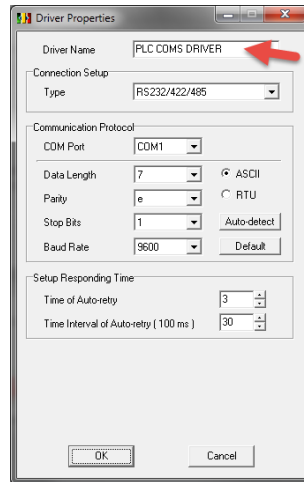
Now add the driver that you want to use to communicate with.



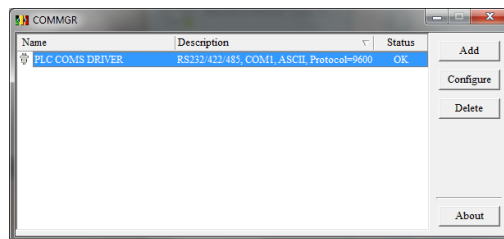
In this example I want to use a serial port (COM1) to talk via RS232 so I select RS232/422/485 as my selection and fill in com port, parity, stop bits and baud rate.



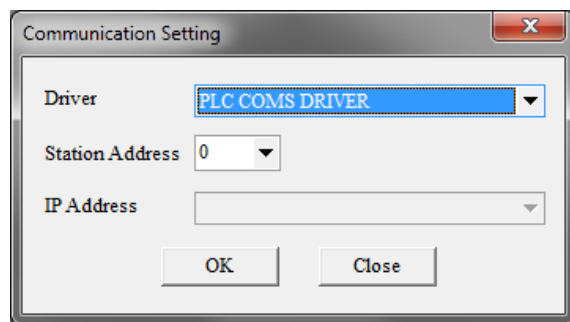
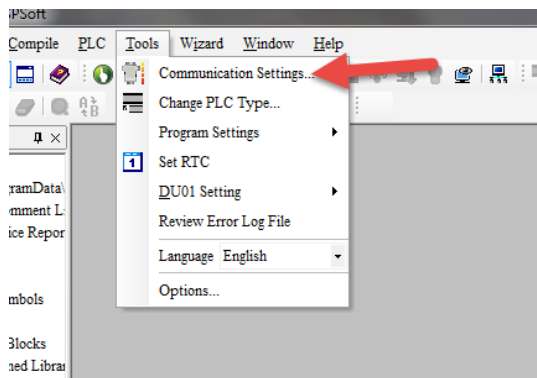
Now change the driver name to something that you will recognise in ISPSOft. In this example we will use PLC COMS DRIVER a name.



Click the OK button to save the settings. You should now you should see the driver in the COMMGR list.



Now go to ISPSOft and check the communications settings now you should get a box pop up where you can select your Driver.



Click OK to save driver selection.

NOTICE

Use of the software and program examples within this document, follow the terms set in our software disclaimer. This is viewable on our website. (<http://www.softstartuk.com/terms-and-conditions#software>)



Softstart UK Limited
14 Brinell Way
Great Yarmouth
Norfolk
NR31 0LU

Tel: +44 (0) 1493 660510 | Fax: +44 (0) 1493 660511 | Email: sales@softstartuk.com